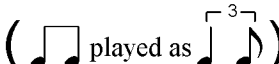


# 21. WHAT ARE WE GONNA DO?

Haunting (  played as  )

Dave Andrews

A m



What are we go - nna do when our kar - ma kicks in?  
What are we go - nna do when our luck runs out?

5 D m



What are we go nna do when our kar ma kicks in?  
What are we go - nna do when our luck runs out?

A m

9 D m



What are we go nna do when our kar ma kicks in? Turn the o ther cheek?  
What are we go - nna do when our luck runs out? Go down for the count?

A m

12

D m

G

A m



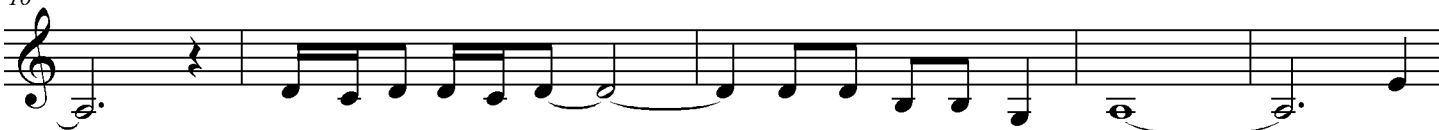
Take it on the chin? What are we go nna do when our kar - ma kicks in?  
Throw in the towel? What are we go - nna do when our luck runs out?

16

D m

G

A m



What are we go - nna do when our kar - ma kicks in? To  
What are we go - nna do when our luck runs out?

21 D m


A m



help us in our cri - sis, Christ bore our pain on the cross. In


# WHAT ARE WE GONNA DO?

25 D m A m  
honour of our suffer - ing, shares our shame. To



Detailed description: A single musical staff in treble clef. The melody consists of eighth and quarter notes. The lyrics are written below the staff.

29 D m A m  
win the fight for jus - tice, Christ count-ed all but loss. And to




Detailed description: A single musical staff in treble clef. The melody consists of eighth and quarter notes. The lyrics are written below the staff.

33 D m G A m  
save our world, we must do the same. and to




Detailed description: A single musical staff in treble clef. The melody consists of eighth and quarter notes. The lyrics are written below the staff.

37 D m G A m 1. 2.  
save our world, we must do the same. En -




Detailed description: A single musical staff in treble clef. The melody consists of eighth and quarter notes. The lyrics are written below the staff. A first and second ending bracket is shown at the end of the staff.

42 D m A m D m  
gage our world with for - ti - tude. Em - brace our world



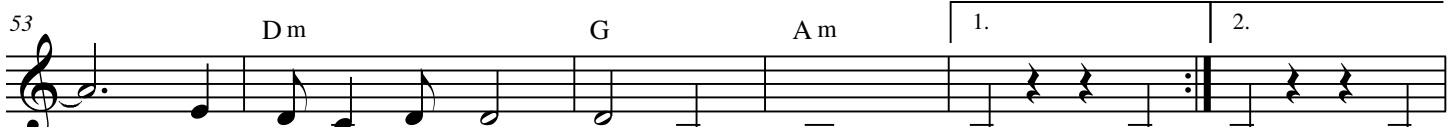
Detailed description: A single musical staff in treble clef. The melody consists of eighth and quarter notes. The lyrics are written below the staff.

47 A m D m A m  
with faith. Im - bue our world with gra - ti - tude.




Detailed description: A single musical staff in treble clef. The melody consists of eighth and quarter notes. The lyrics are written below the staff.

53 D m G A m 1. 2.  
In - fuse our world with grace. En - - - In -



Detailed description: A single musical staff in treble clef. The melody consists of eighth and quarter notes. The lyrics are written below the staff. A first and second ending bracket is shown at the end of the staff.

59 D m G A m  
fuse our world with his a - ma - zing grace.



Detailed description: A single musical staff in treble clef. The melody consists of eighth and quarter notes. The lyrics are written below the staff.