

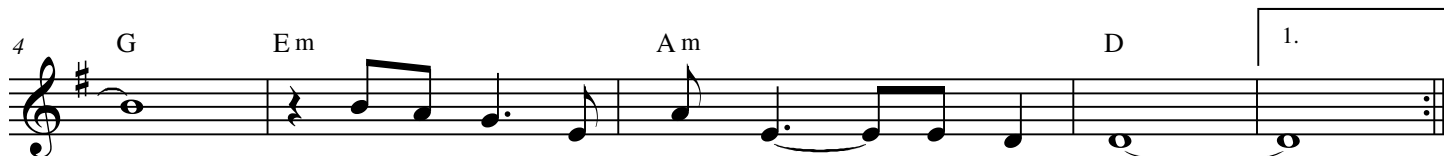
3. SET MY HEART ON FIRE

Easy Rock

Dave Andrews*



Where would I be with - out you? Would - n't have a clue
What would I do with - out you? Probab - ly sing the blues.
I know I some - times fal - ter, I know I some - times fall,



An - y where is no - where with out you.
Ever - y thing is noth - ing with - out you. - - - -
But you know you brought me through it all. - - - -



You've al - ways been the star in my sky Al - ways been the light in my eye



Al - ways been the spark that set my heart on fire

* Based on a melody by John Hall

SET MY HEART ON FIRE

18 $\text{\textcircled{\text{#}}}$ A m D G 1. Em

Set my heart on fire. Set my heart on fire. Set my heart on -

23 2. G A m D

You brought me through dis - as - ter You brought me through dis - tress

27 G Em A m D

You brought me a - ny hope of ha - ppi - ness You've al - ways been the

32 G A m D G

star in my sky Al - ways been the light in my eye Al - ways been the

36 Em A m D A m

spark that set my heart on fire Set my heart on fire.

41 D G Em Repeat and fade

Set my heart on fire. Set my heart on